

Artec Ray II

Multicharger User Manual



Version 1.1



Introduction



This manual contains important safety directions as well as instructions for setting up the product and operating it. Refer to “Safety Directions” for further information.

Read carefully through the User Manual before you switch on the product.

Product identification

The type and serial number of your product are indicated on the type plate. Always refer to this information when you need to contact your agency contacting Artec 3D Support Team or Authorized Reseller.

Description of the System

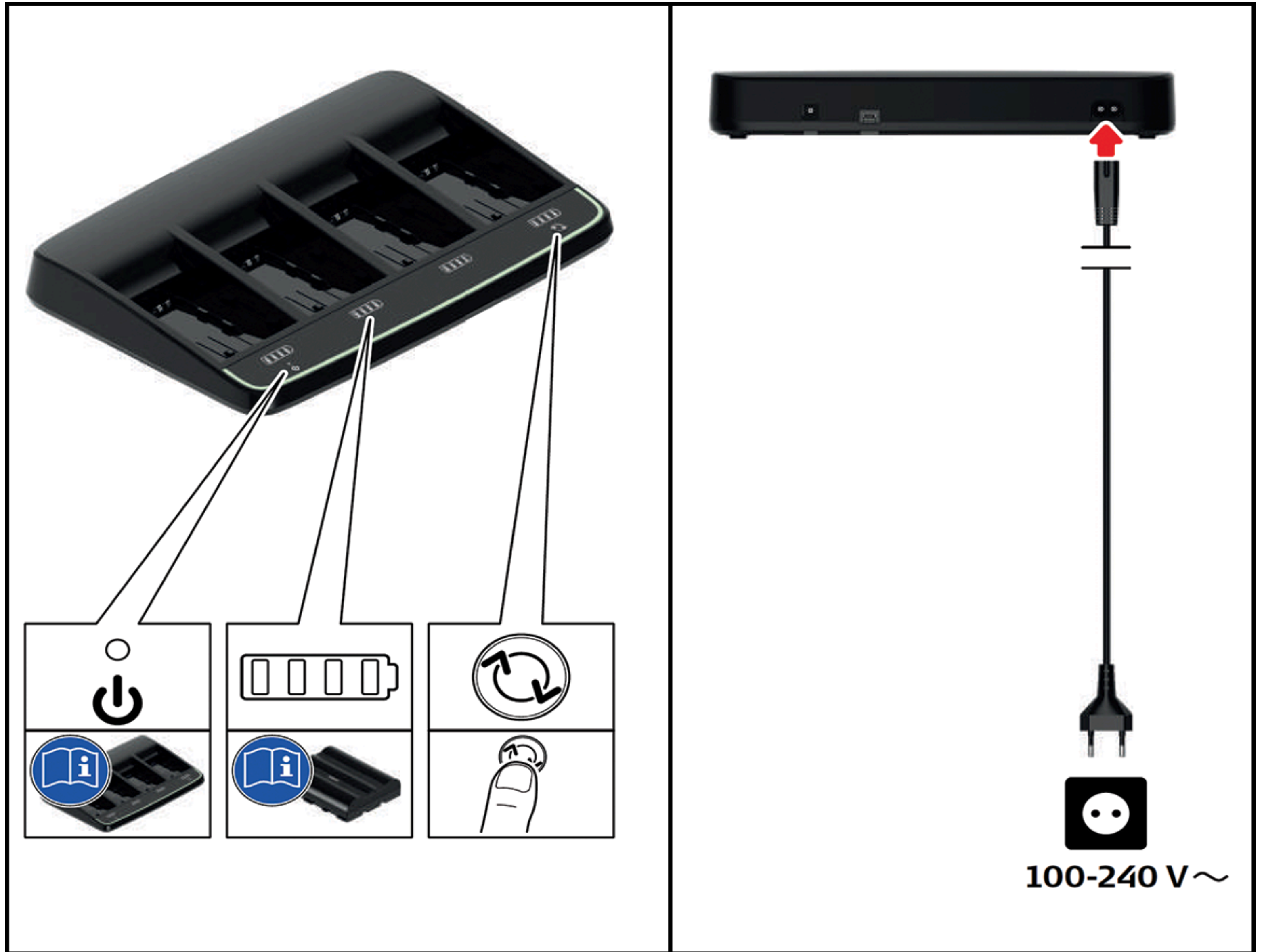
Main component

Multicharger



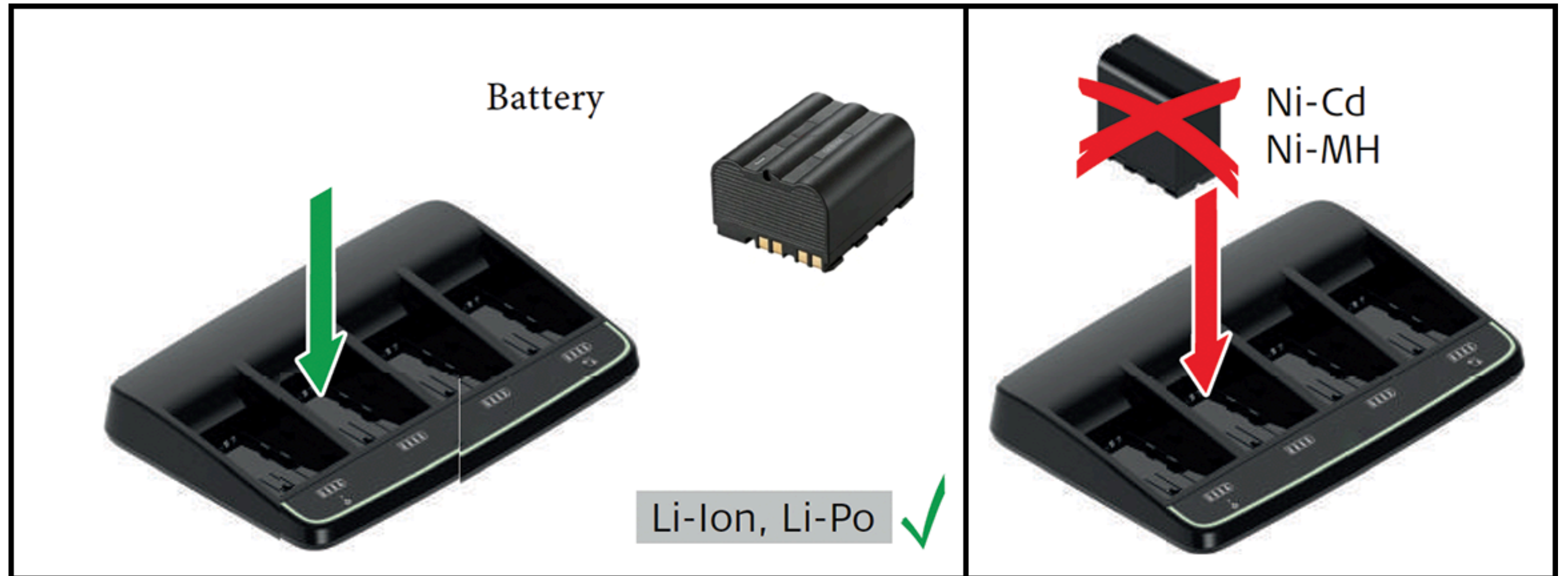
Description of the System

Charger components

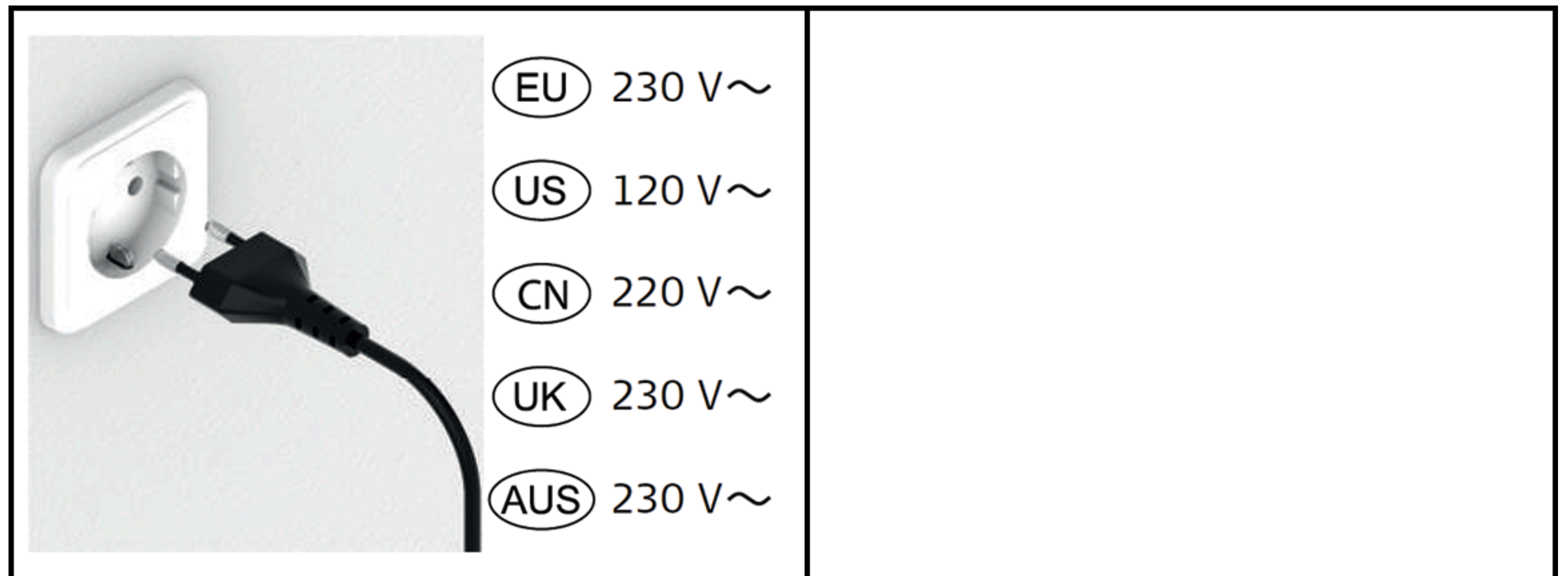


Description of the System

Supported batteries

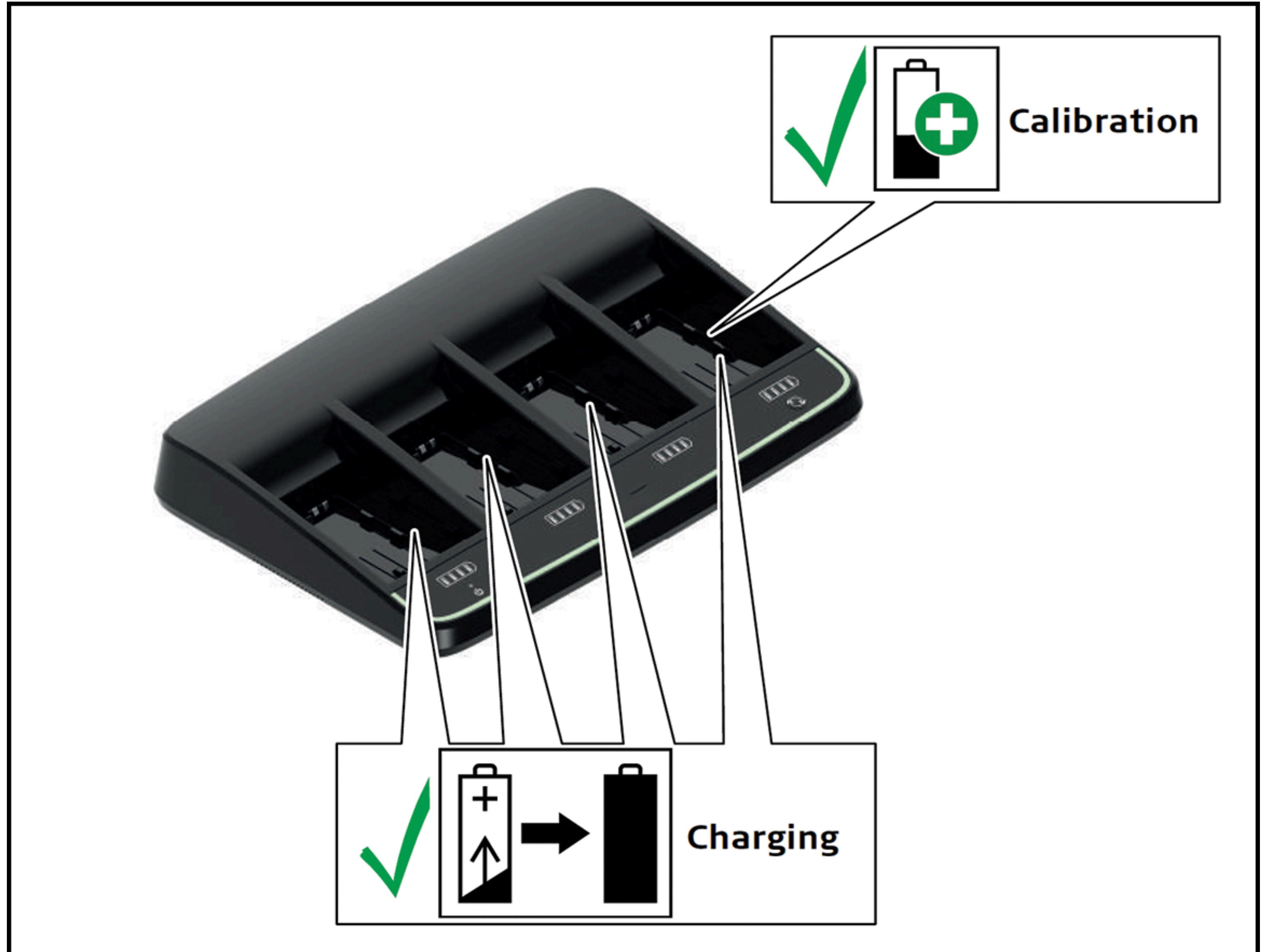


Power supply



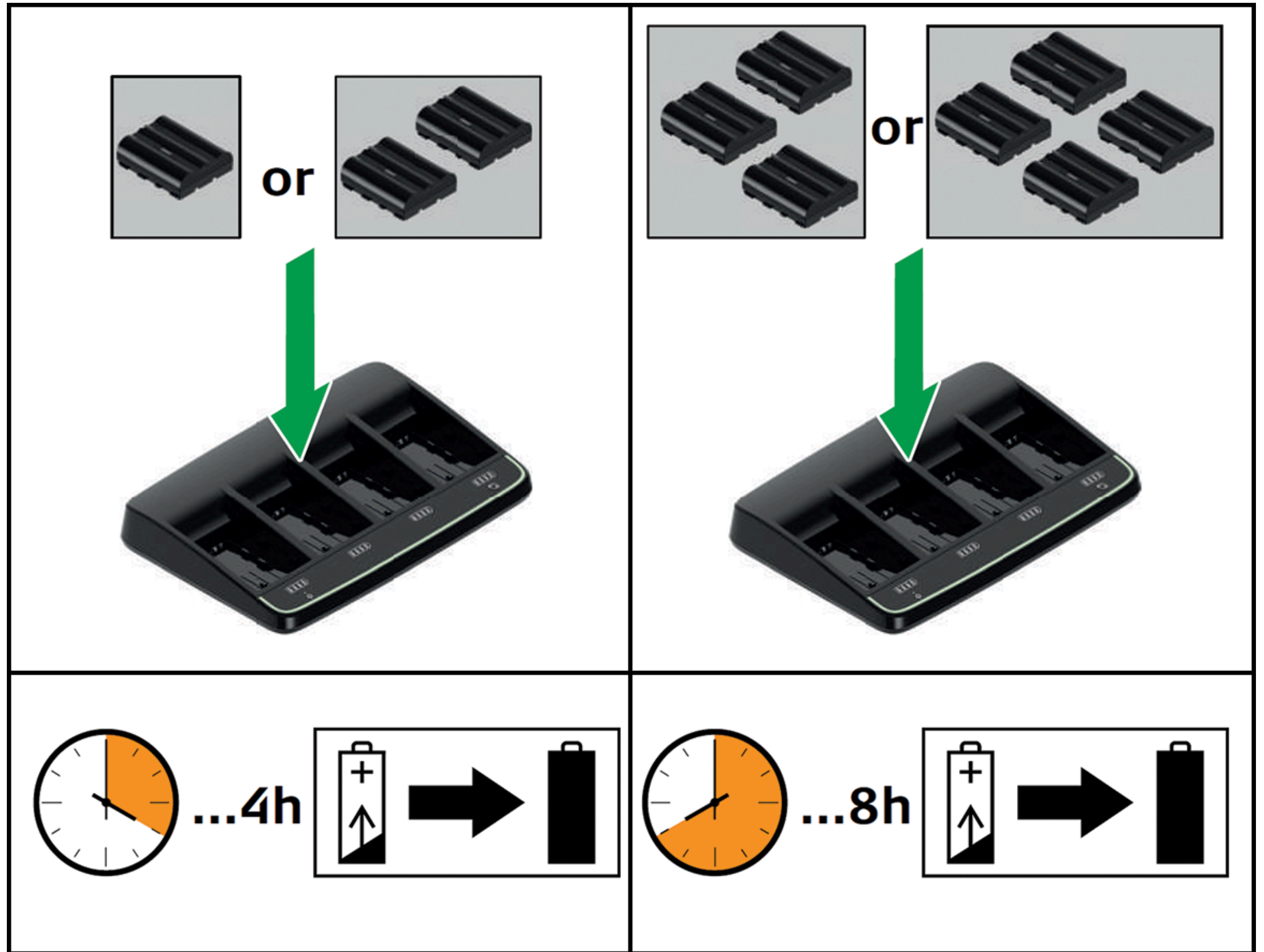
Description of the System

Charging function /
Calibration function



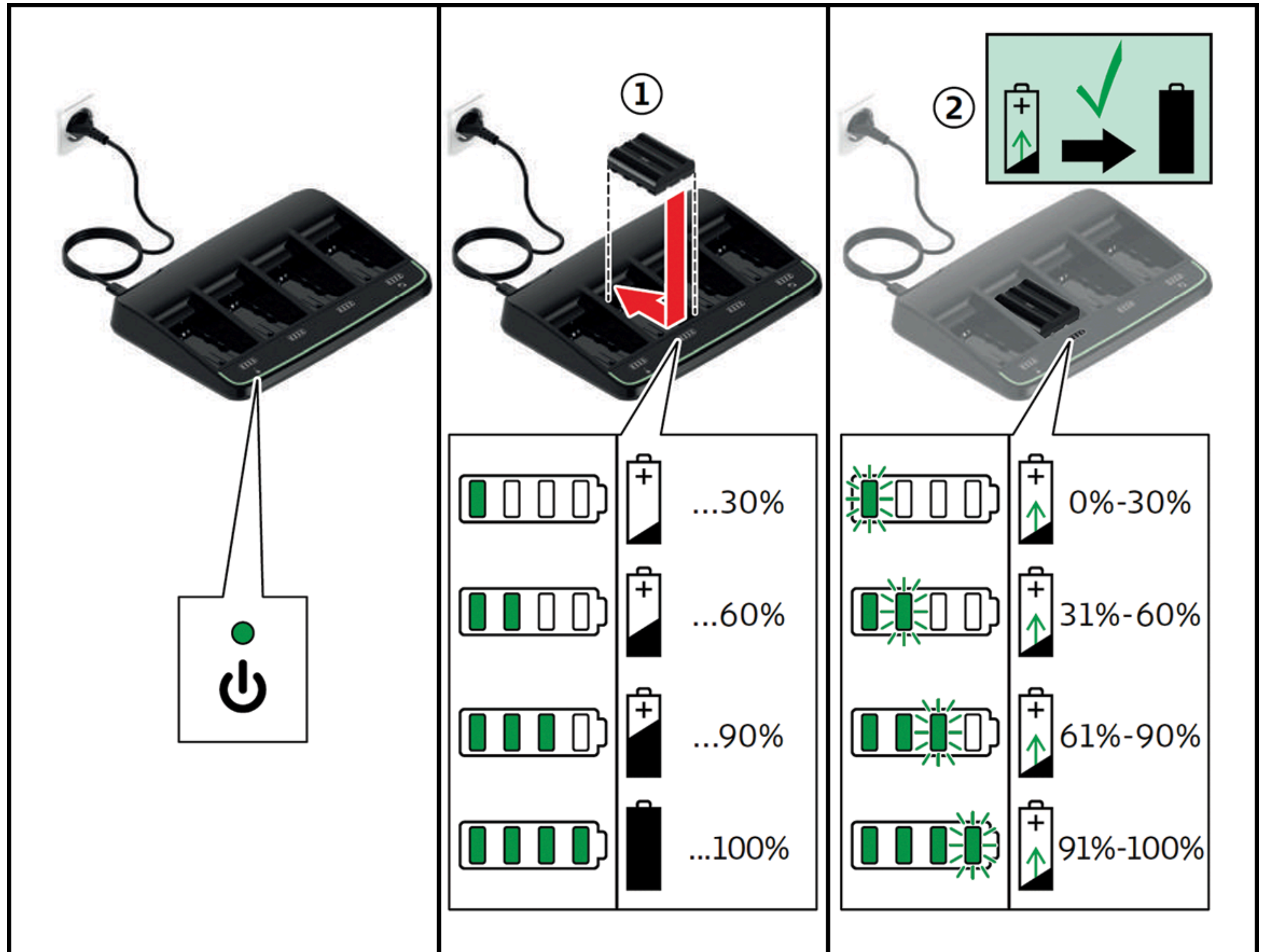
Description of the System

Charging times



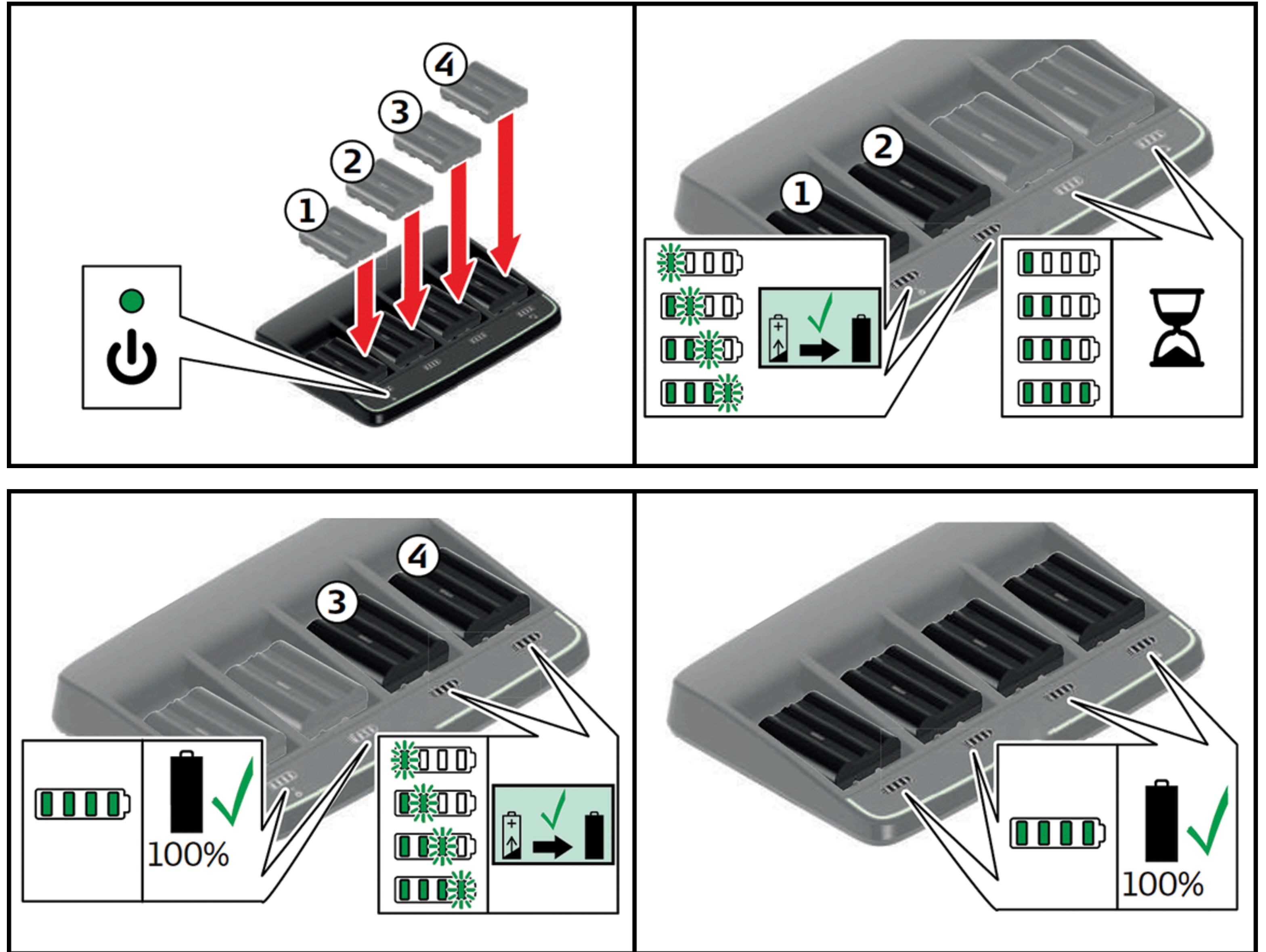
Charging Function

Inserting and charging the batteries



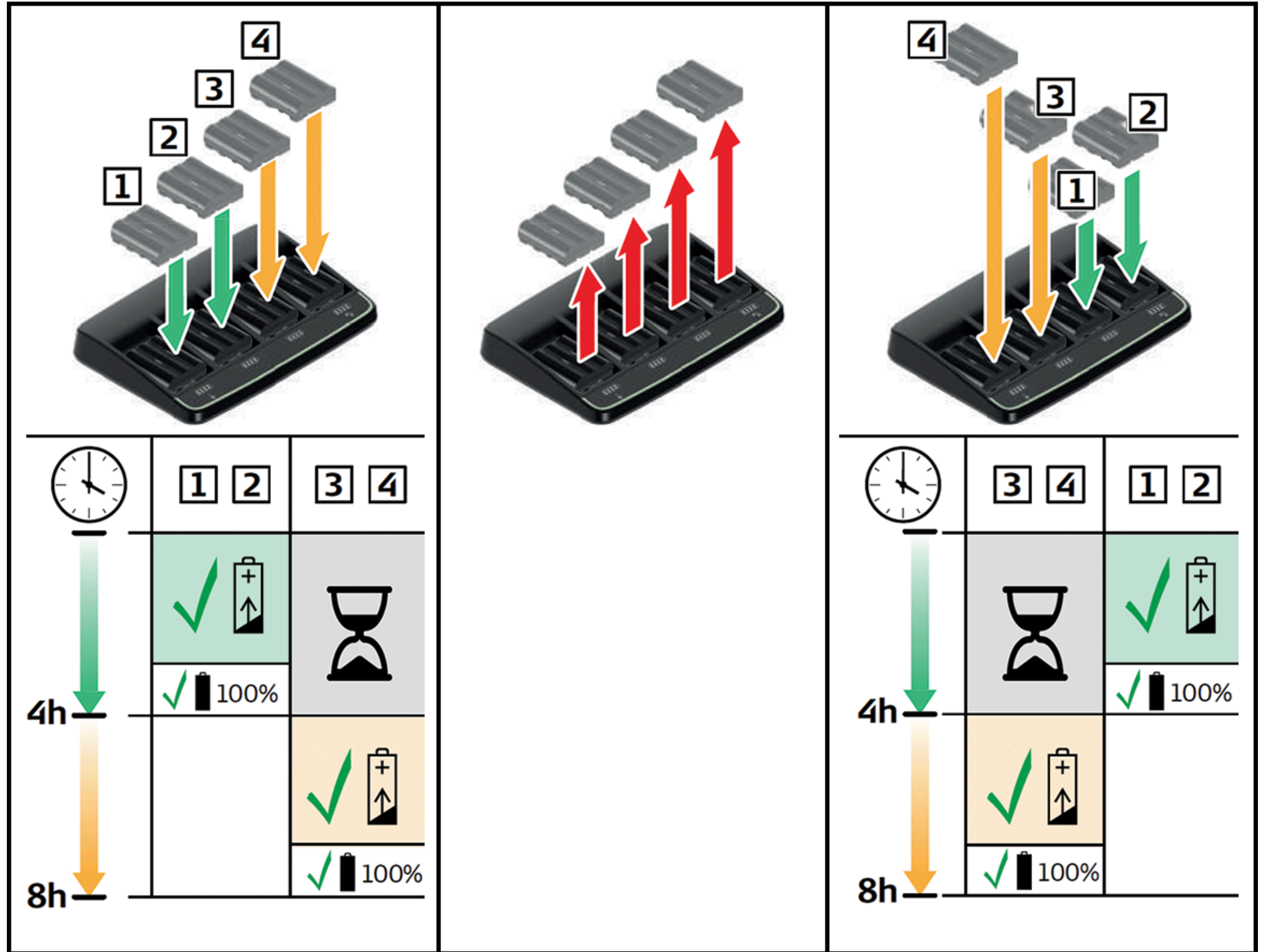
Charging Function

Charging priority



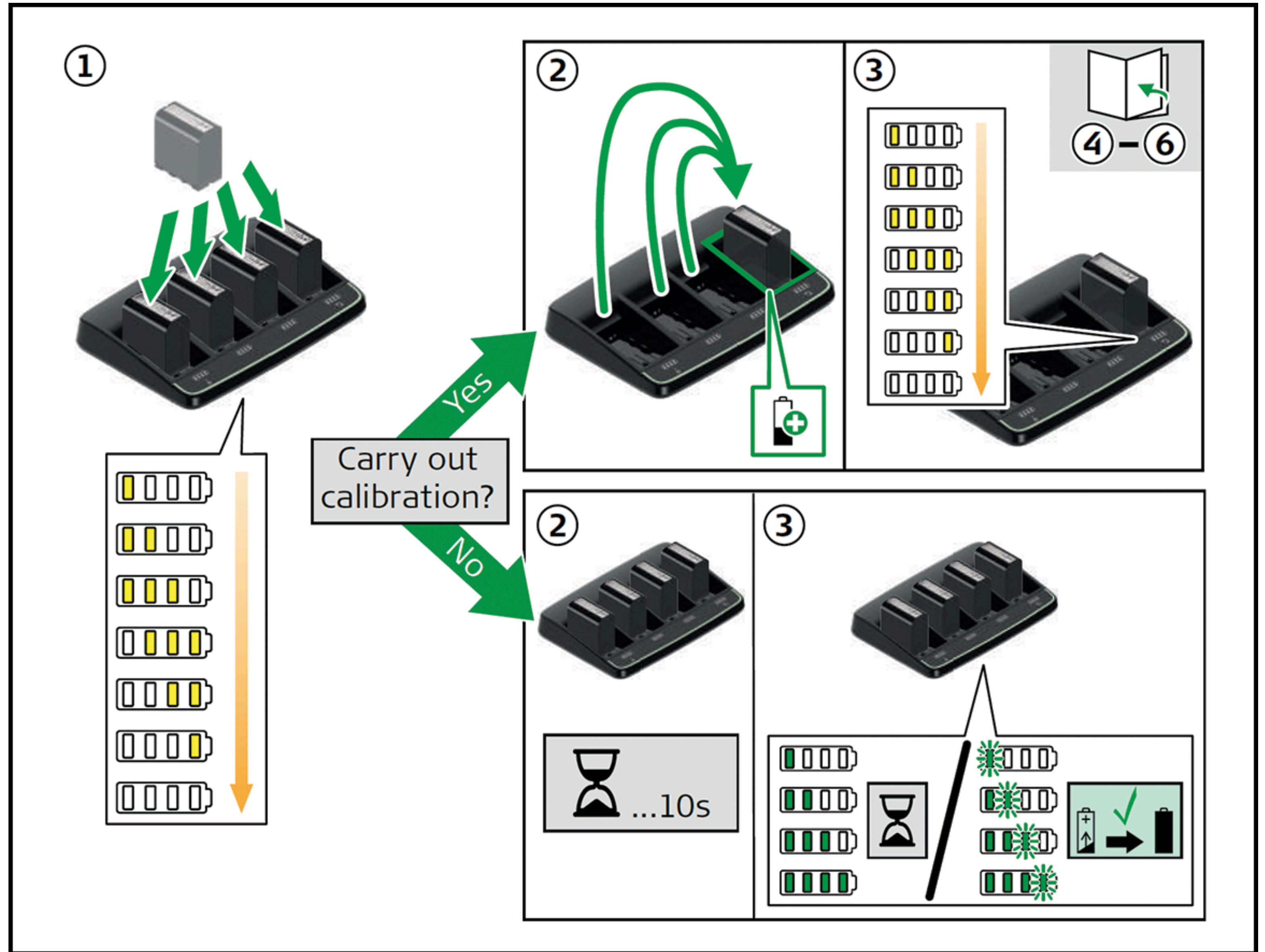
Charging Function

Change of charging priority



Calibration Function

Option 1: Charger recommends a calibration



Calibration Function

4

2s

5

...5s

Estimated calibration time

	<8h
	8-12h
	12-16h
	16-24h

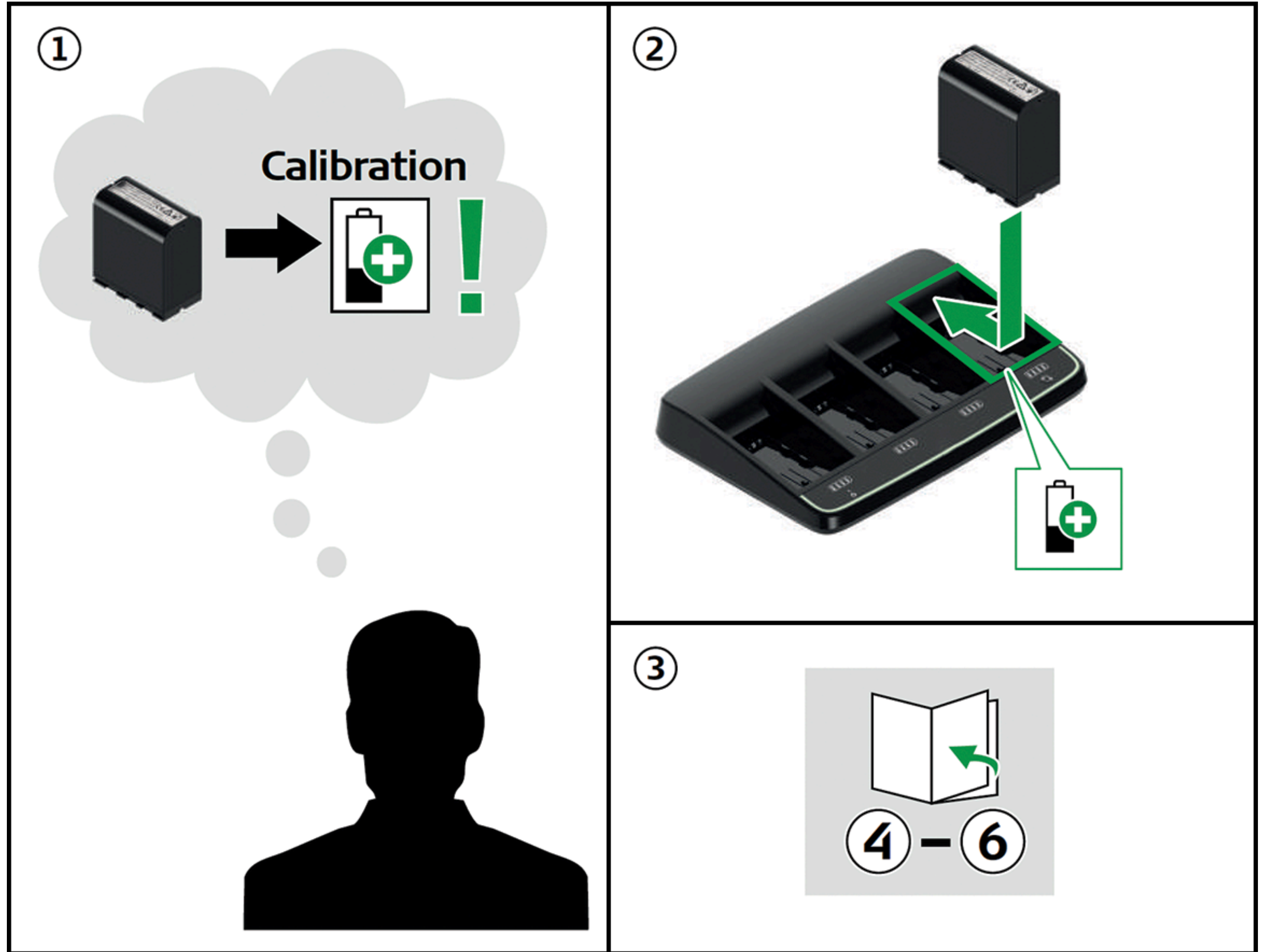
6

Progress

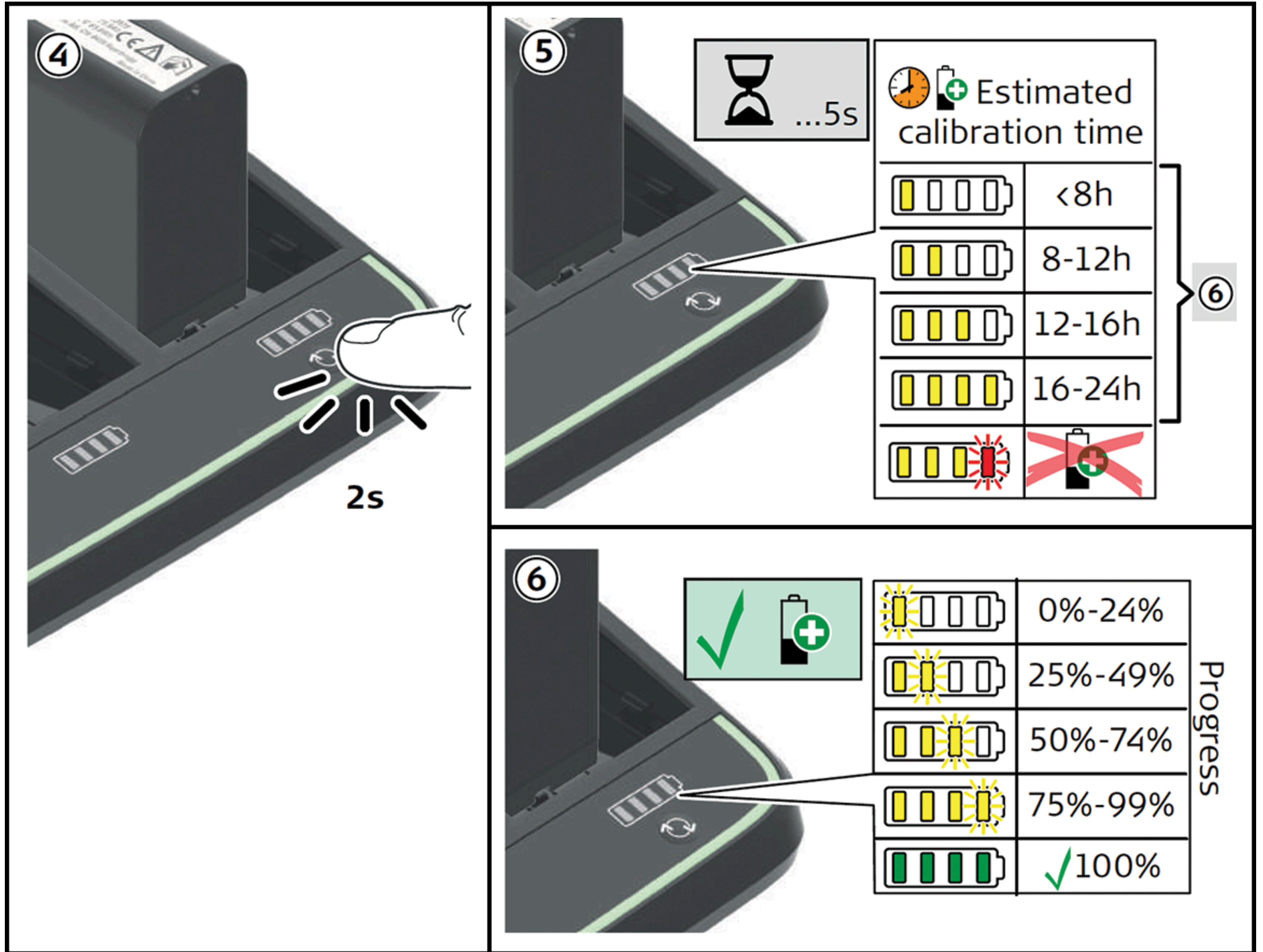
	0%-24%
	25%-49%
	50%-74%
	75%-99%
	✓ 100%

Calibration Function

Option 2: Request a calibration



Calibration Function



Troubleshooting

Error indication

